



# GAT MONTHLY MEMBERSHIP PROGRESS REPORT

Results as of: 3/31/2023

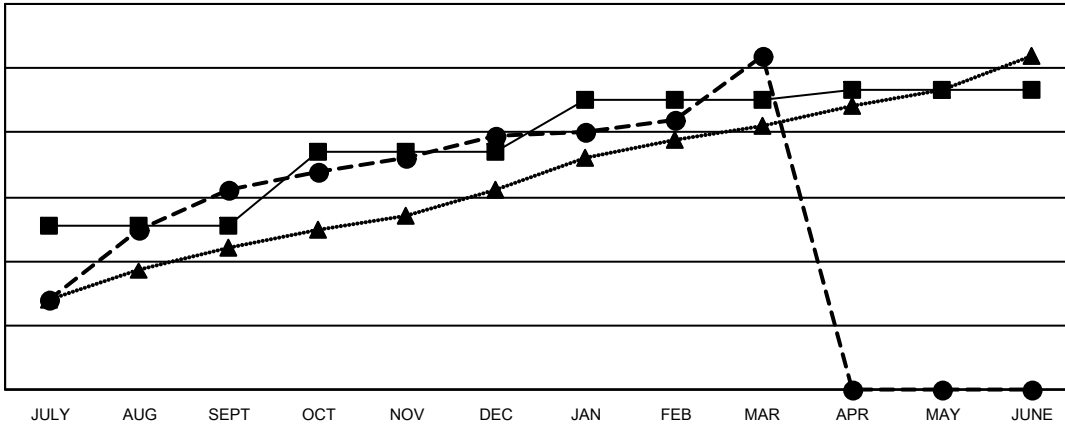
Multiple District 322

LOCATION: INDIA

Clubs			
RESULTS FOR 2022-2023			
QUARTER	NEW CLUB GOAL	NEW CLUBS	DROPPED CLUBS
JULY/AUG/SEPT	51	62	15
OCT/NOV/DEC	23	17	43
JAN/FEB/MAR	16	25	23
APR/MAY/JUNE	3	0	0

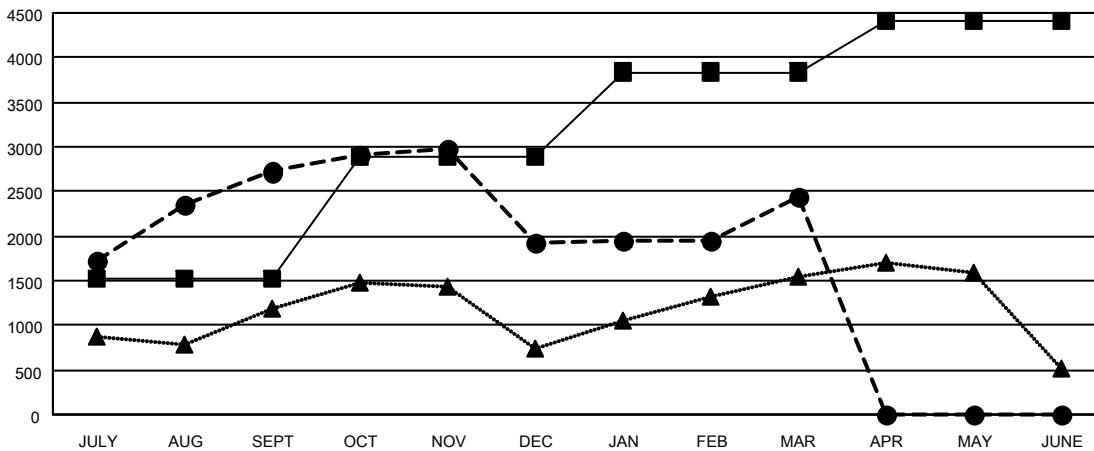
Members			
RESULTS FOR 2022-2023			
QUARTER	MEMBER GROWTH NET GOAL	MEMBER GROWTH ACTUAL	DROPPED MEMBERS ACTUAL (including transfers)
JULY/AUG/SEPT	1523	3,594	731
OCT/NOV/DEC	1363	1,537	2,231
JAN/FEB/MAR	953	1,395	671
APR/MAY/JUNE	575	0	0

GOALS AND ACTUAL NEW CLUBS CUMULATIVE



- - CURRENT YEAR GOALS FOR NEW CLUBS
- - CURRENT YEAR ACTUAL NEW CLUBS
- ▲ - LAST YEAR ACTUAL NEW CLUBS

GOALS AND ACTUAL MEMBERS CUMULATIVE



- - MEMBER GROWTH NET GOAL
- - MEMBER GROWTH ACTUAL
- ▲ - LAST YEAR MEMBERSHIP ACTUAL

DROPPED CLUBS: 81	
<b>DROPPED MEMBERS</b>	
DECEASED	87
CLUB CANCELLED	1,194
OTHER	2,352
<b>TOTAL</b>	<b>3,633</b>

692 CLUBS OF 1150 ADDED 1 OR MORE NEW MEMBERS

[CLICK HERE FOR CUMULATIVE MEMBERSHIP DATA](#)

GENDER DISTRIBUTION	
MALE	27,020 (68.00%)
FEMALE	12,708 (31.98%)
NON BINARY	0 (0.00%)
PREFER NOT TO ANSWER	10 (0.03%)
<b>TOTAL FAMILY UNIT MEMBERS</b>	<b>21,745</b>
<b>FAMILY MEMBERS PAYING HALF DUES</b>	<b>13,459</b>